

# COMPLETE RECYCLING SYSTEMS



Delivering superior waste management equipment

Issue February 2025

INSIDE Product Highlights | Mobile vs. Stationary | Sustainability Focus

## The Importance of Custom Waste Management Solutions

Every waste facility has a unique story to tell. The challenges you face, the materials you process, and the goals you aim to achieve are all distinct—and your waste management solution should be too. Yet, many facilities settle for standard equipment, missing out on the efficiencies and opportunities that only a tailored approach can deliver.

At CRS NI, we believe that waste management should work for you, not the other way around. With over a decade of experience crafting custom waste management solutions, we design waste management equipment that meets your specific needs, optimises your operations, and helps you turn waste into value.

### Why Custom Waste Management Solutions Matter

In an industry as dynamic as waste management, no two facilities are alike. The materials you process, the challenges you face, and the goals you set all demand a solution that fits—not just in theory, but in practice. Standard equipment often falls short, leaving potential untapped and inefficiencies unchecked.

Custom waste management solutions are



the key to overcoming these obstacles. By tailoring systems to your specific needs, you can unlock higher recovery rates, streamline operations, and achieve sustainability goals with greater impact. Here's why choosing a custom approach makes all the difference:

#### 1. Maximising Resource Recovery

Every waste stream is unique, from co-mingled recyclables to specialist plastics. Standard equipment often misses the mark in efficiently sorting and processing these materials, leading to wasted resources. Custom waste solutions are designed with precision

to maximise recovery rates, ensuring that every recyclable material is reused effectively.

#### 2. Enhancing Operational Efficiency

Waste management facilities and recycling plants face constant pressure to process materials faster and more cost-effectively. Off-the-shelf systems might cause bottlenecks or fail to integrate smoothly into existing workflows. Custom waste solutions optimise material handling, streamline processes, and minimise downtime, resulting in higher throughput and lower operational costs. >>

### 3. Meeting Environmental and Regulatory Goals

Strict environmental regulations demand higher standards for waste processing and landfill reduction. Tailored waste management systems ensure compliance with these regulations while helping facilities reduce their carbon footprint. At CRS NI, we design equipment that empowers facilities to operate sustainably by recovering more materials and sending less to landfill.

### 4. Addressing Space and Design Constraints

Every facility has its own layout and

operational constraints, which can make implementing standard systems difficult. Custom waste equipment is designed to fit seamlessly within your space, maximising efficiency without requiring costly modifications to your plant.

### 5. Preparing for the Future

The waste management industry is constantly evolving, with new materials, technologies, and market demands emerging regularly. Custom waste solutions provide the flexibility needed to adapt to these changes, future-proofing your operations and ensuring long-term success.



## How CRS NI Supports Your Goals

At CRS NI, we don't just provide machinery—we deliver waste solutions tailored to your needs. Our extensive range of customisable waste equipment includes trommels, fines recovery systems, hoppers and conveyors, air separation systems, and steel belt feeders. Whether you're handling heavy-duty C&D waste or lightweight plastics, our team of specialists will design and manufacture equipment that meets your specific requirements.

#### Cost-Efficient Operations

Our innovative waste management systems are built to maximise efficiency, reducing operational costs and improving resource recovery rates. By increasing throughput and minimising downtime, you can achieve greater profitability while staying compliant with environmental regulations.

#### A Turnkey Approach

From initial consultation to installation and ongoing support, we provide a complete service that ensures your waste equipment integrates seamlessly into your operations. By focusing on your unique challenges, we deliver waste management systems that enhance

productivity, reduce costs, and improve sustainability.

#### Innovating for Sustainability

Our mission to “reduce and reuse” drives everything we do. By investing in CRS NI's custom solutions, you're not only improving your operations but also contributing to a more sustainable future. Our waste and recycling systems are engineered to recover valuable resources and reduce environmental impact, aligning your business with global sustainability goals.

#### Tailored to Your Facility

No two plants are the same. That's why we design and manufacture waste systems that fit seamlessly into your operations, from spatial constraints to specific processing goals.

#### Built to Last, Built to Evolve

Our waste and recycling systems aren't just innovative—they're resilient. CRS NI waste equipment is designed to handle the toughest materials while remaining adaptable to future demands. Whether scaling up operations or introducing new waste streams, our waste management solutions grow with you.

## Why Custom Waste Solutions Are the Future

In an industry where efficiency and sustainability are paramount, custom waste management solutions are no longer a luxury—they're a necessity. They offer the adaptability, precision, and performance needed to overcome challenges, seize opportunities, and build a better future for waste management.

At CRS NI, we're proud to lead the way in delivering innovative, bespoke waste solutions for recycling plants worldwide. With a highly skilled team and over a decade of experience, we have the expertise to help you achieve your goals.

**Get in touch** with CRS NI today to explore how custom waste systems can transform your waste management process.

# Transforming Recycling for the Myers Group

At CRS NI, we're constantly pushing boundaries to deliver innovative recycling solutions that make a tangible difference. One of our recent projects for the Myers Group in Huddersfield demonstrates how we're shaping the future of waste management by tailoring systems to meet unique client needs.

## Meeting the Client's Goals

The Myers Group faced a clear challenge: they needed to boost production and recover more valuable materials that were previously being lost to landfill. Achieving this required a custom solution capable of maximising efficiency while maintaining precision in material sorting.

## A Custom-Engineered Solution

Our team designed and manufactured an advanced recycling system tailored to the Myers Group's specific requirements. Key features include:

- A 6x1.8m double-deck screen for high-capacity screening with flip flow technology, which ensures optimal separation of fines, maximising material recovery.
  - Two Air Separation Units (ASUs), effectively removing lightweight contaminants for cleaner output.
- Built to handle Construction & Demolition (C&D) and Commercial & Industrial (C&I)

waste, the plant is a testament to CRS NI's ability to handle complex material streams with cutting-edge technology.

## Transforming Operations

Previously, the Myers Group relied on manual sorting using excavators, an inefficient and labor-intensive process. With CRS NI's system in place:

- Materials are now neatly organised into dedicated bays, significantly speeding up sorting.
- Recovery rates have improved dramatically, allowing the Myers Group to profit from previously wasted materials.

The process is now faster, simpler, and more sustainable, driving efficiency across the board.

## Delivering Results That Matter

The new plant has redefined the Myers Group's operations, unlocking new revenue streams through material



recovery. Their feedback highlights the transformative impact of the solution, which not only meets their needs but positions them for long-term success.

## Innovation Backed by Expertise

This project reflects CRS NI's dedication to creating bespoke systems that deliver measurable results. By leveraging our experience and continuously refining our approach, we empower clients to overcome challenges and achieve their goals.

**If you're ready to transform your recycling processes and discover what's possible with CRS NI's tailored solutions, [contact us today.](#)**

# A Fresh Start: What Our New Offices Mean for CRS NI

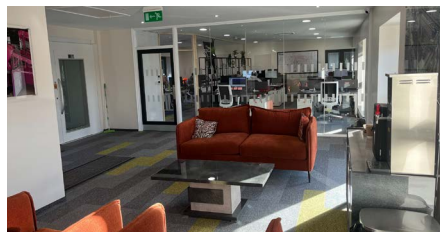
Innovation is at the heart of everything we do, and that extends to our new office space. The move to our upgraded facilities has brought a wave of positive changes, helping us streamline operations, improve communication, and create a more comfortable and efficient working environment for our entire team. Here's how these updates are making a difference:

## Enhanced Communication and Collaboration

The open-plan office design has revolutionised how our teams interact, breaking down barriers and fostering seamless communication across departments. Additionally, our state-of-the-art manufacturing software is a game-changer, offering real-time tracking of production stages and 3D visualisations for precise fitting. These advancements ensure smoother coordination between our office and workshop teams.

## A More Comfortable Workplace

General comfort has taken centre stage with the introduction of modern facilities. From spacious meeting rooms equipped



with cutting-edge software to a new canteen designed for both office and workshop staff, the upgrades create a better environment for productivity and collaboration.

## Optimised Space and Accessibility

We've also reimaged our site layout for maximum efficiency. Where our old offices once stood, we've constructed a new shed to free up an original one for

assembly fitting. Outside, our redesigned yard now features a well-laid-out car park and improved accessibility for large lorries and complex deliveries, making logistics smoother than ever.

## Looking Ahead

Our new offices reflect our commitment to innovation, not just in the solutions we provide but in the way we operate. With these changes, CRS NI is better equipped than ever to deliver the exceptional waste management solutions our clients expect. We're excited to continue this journey with our team, partners, and customers.

**Have questions or want to see our operations in action? [Reach out today](#) —we'd love to hear from you!**



# Mobile vs. Stationary Waste Equipment: Which Is Right for Your Plant?



Choosing the right waste recycling equipment is one of the most critical decisions for any waste management facility. The choice between mobile and stationary waste equipment depends on various factors, including the type of waste processed, operational needs, and long-term goals. Each option offers distinct benefits, and understanding these differences can help you make the best decision for your plant.

**A**t CRS NI, we specialise in delivering both mobile and fixed waste systems, tailored to meet the unique challenges of waste management and recycling plants worldwide. Let's explore the key differences and help you determine which solution is the best fit for your operations.

## Understanding Their Applications

Mobile waste processing stations are designed for flexibility. They shine in scenarios where waste streams vary, such as temporary projects, remote locations, or facilities with multiple sites. A construction project in a remote area, for instance, might require quick deployment and easy relocation to handle varying waste volumes effectively.

In contrast, fixed waste systems or stationary waste systems are built for consistency and scale. Recycling plants that process high, steady volumes of materials like C&D, C&I, or MDR benefit from the robust, customisable capabilities of stationary systems. They integrate seamlessly into permanent operations, making them the go-to choice for

centralised plants that handle complex sorting or require advanced automation.

## Evaluating Costs

When it comes to upfront investment, mobile waste recycling systems tend to be more accessible. Its modular design and ease of deployment make it an attractive option for facilities with tighter budgets or those just entering the waste management industry. However, operational costs can be higher due to factors like fuel for relocation and the wear-and-tear associated with frequent transportation.

Stationary waste equipment, on the other hand, demands a larger initial outlay. The design and installation process often include tailored features to suit the plant's specific layout and processing needs. While this means a higher upfront cost, the long-term operational savings and higher throughput efficiency often result in a greater return on investment.

**Maintenance:** The Key to Longevity  
Maintenance demands differ significantly between mobile and stationary waste

systems. Mobile equipment, exposed to constant relocation and variable site conditions, typically requires more frequent but straightforward servicing. Its components are often modular, making repairs quicker and less intrusive.

In contrast, stationary waste systems are engineered for durability, often requiring less frequent maintenance. However, when servicing is needed, repairs can take longer due to the larger and more integrated nature of the systems. This trade-off is offset by the reduced risk of downtime in a controlled environment.

## The Benefits of Mobile Waste Systems

Mobile waste systems are designed for flexibility, making it ideal for operations that demand versatility and adaptability.

## Ease of Deployment

Mobile waste equipment can be moved and set up quickly, allowing you to respond to changing operational needs or manage waste in multiple locations. This makes it perfect for smaller sites or temporary projects.

### Cost-Effective for Short-Term Use

For facilities handling seasonal waste streams or undertaking pilot projects, mobile equipment offers an efficient, low-commitment solution.

### Compact Design for Space Efficiency

With a smaller footprint than stationary systems, mobile waste equipment is an excellent choice for facilities with limited space or for on-site processing at remote locations.

### Reduced Initial Investment

Mobile waste systems generally involve a lower upfront cost compared to stationary systems, making them accessible for facilities with tight budgets.



### The Advantages of Stationary Waste Systems

Stationary or fixed waste equipment is the go-to solution for facilities with long-term, high-volume processing needs.

### High Throughput Capacity

Designed for larger operations, stationary waste systems handle higher waste volumes efficiently, making them ideal for facilities with steady, high-demand waste streams.

### Customisable for Specific Requirements

Stationary equipment can be tailored to your plant's exact needs, ensuring optimal performance for your unique materials and processes.

### Durability and Longevity

Built for long-term operation, stationary waste systems offer unmatched reliability, making them a solid investment for facilities focused on consistent, high-volume output.

### Enhanced Automation

Stationary waste systems often integrate advanced automation technologies, reducing manual labour and streamlining operations.

## Key Considerations When Choosing Between Mobile and Stationary Waste Systems

When deciding between mobile and stationary waste equipment, consider the following:

- **Operational Scale:** Large-scale facilities benefit from the capacity and durability of stationary systems, while smaller or multi-location sites may find mobile solutions more practical.
- **Material Types:** Complex or high-volume waste streams often require the customisation and efficiency of stationary equipment.
- **Budget and ROI:** Mobile waste systems involve a lower upfront cost, while stationary waste systems offer long-term value through durability and scalability.
- **Space Availability:** Limited space or remote locations may make mobile waste systems more appealing.



## CRS NI: Helping You Make the Right Choice in Waste Management



Selecting the ideal solution comes down to aligning your plant's priorities with the capabilities of each system. If your operations demand flexibility, rapid deployment, or the ability to process waste in multiple locations, mobile equipment may be the perfect fit. For plants focusing on high-capacity, long-term operations with a need for advanced automation, stationary systems are unmatched. At CRS NI, we provide both static and mobile waste management systems according to your needs.

Take a look at our products and let our experts help you make the right choice. [Get in touch](#) with CRS NI today to discuss your plant's requirements, and let's find the perfect solution to drive your waste management success.

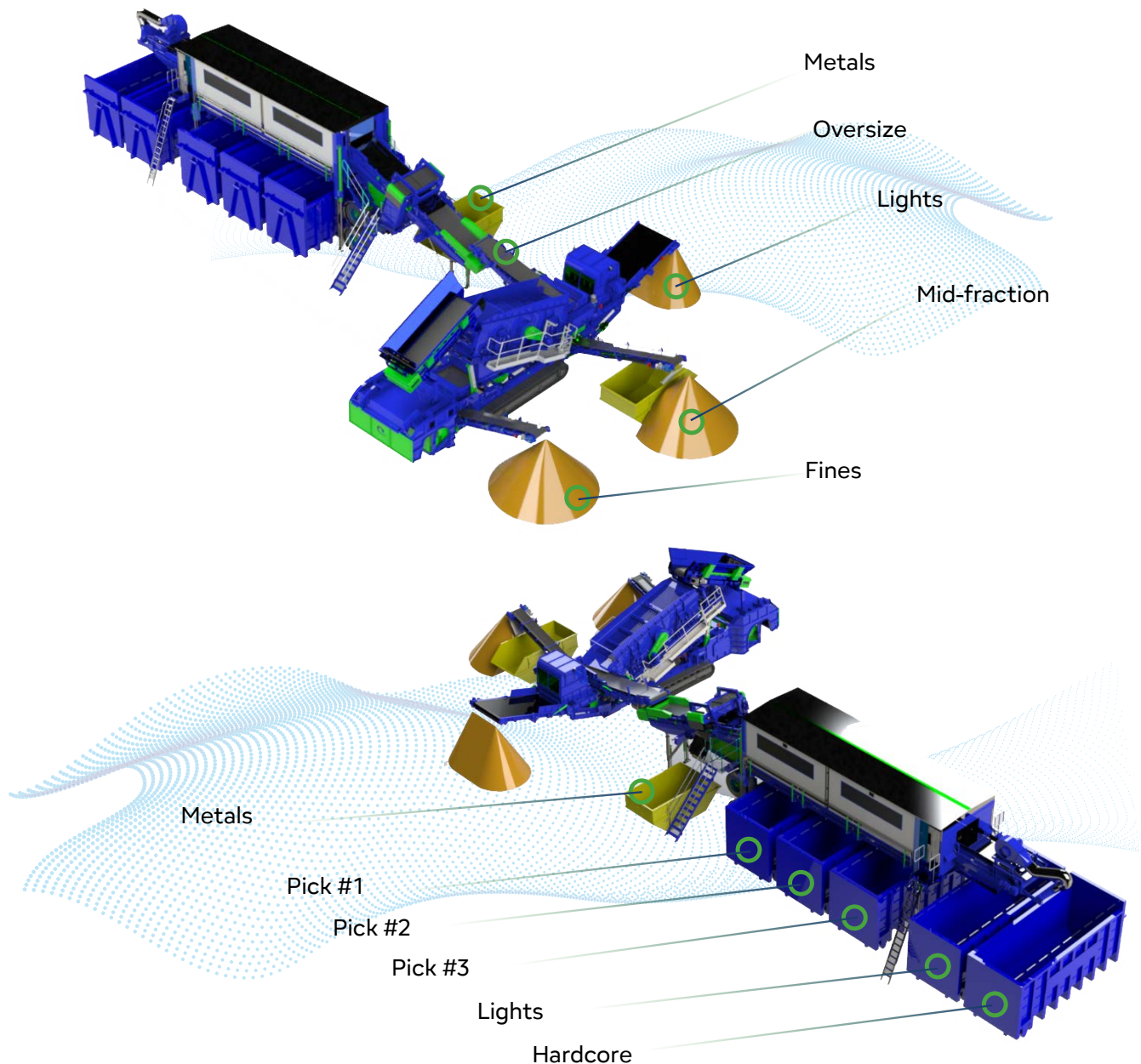
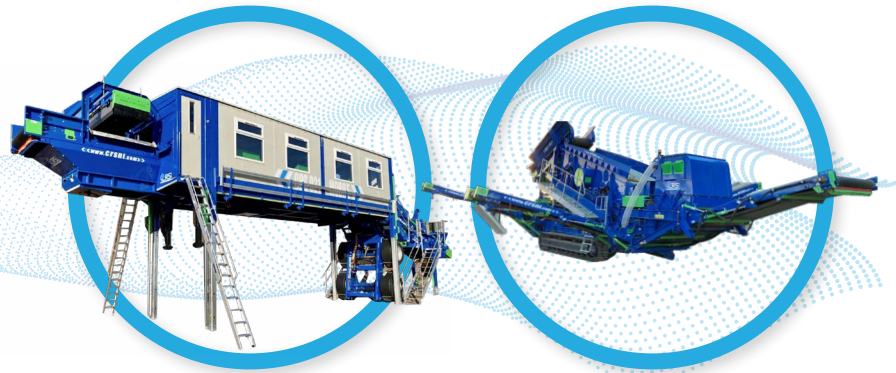


## Product Highlights

# CRS-021 Picking Station & CRS-038 Screen

The machines as a pair are the equivalent of a typical static waste facility only they are fully mobile, and can function in more than one configuration.

- Both machines are dual power, meaning they can be run by the generator or mains electricity.
- Only 2 machines to run so the running costs are kept to a minimum.
- Both machines are unique to the market.
- Together they will be able to produce 10+ recoverable materials.



## Case Study

# GAP Group's Plant Upgrade: Achieving a Fivefold Increase in Throughput with CRS

GAP Group approached CRS NI Ltd. with a clear challenge: their outdated plant for processing Waste Electrical and Electronic Equipment (WEEE) was no longer meeting their throughput demands. The solution provided by CRS would completely transform their operations.

### The Challenge: Old Plant, Limited Capacity

GAP Group's existing plant had been in operation for years, but it was struggling with outdated equipment and insufficient throughput. As Peter Moody from GAP Group described:

"The issues with our existing plant were that it was too old, and its throughput was only around two tonnes per hour. It just needed replacing to meet our growing demands."

In addition to the age of the plant, the new system had to fit within a specific footprint and work around existing equipment, including shredders that were critical to their process.

### Why CRS?

So why did GAP Group choose CRS? It was all about reputation and recommendation.

"CRS has a strong name within the recycling industry," Peter explained. "We knew someone who had worked with CRS on equipment, and they were highly recommended. They have a proven track record, which gave us confidence."

### The Solution: Design, Build, and Install – Seamlessly

CRS worked closely with GAP Group to design and install a plant that would meet their specific needs. This included:

**Tailored Design:** CRS integrated the new plant into a fixed footprint while working around existing equipment, including shredders that were crucial to GAP Group's process.



**Increased Capacity:** The new plant dramatically increased throughput from 2 tonnes per hour to 10 tonnes per hour.

**Streamlined Operation:** CRS helped GAP Group meet their goal of processing 100 tonnes per day in just one shift.

Peter shared his experience:

"CRS designed, built, and installed the entire plant from start to finish. The whole process was seamless. Their communication was excellent, and the final solution was exactly what we needed."

### The Process: Collaboration from Start to Finish

From the very beginning, GAP Group and CRS worked closely together to create the right solution.

#### Input Material and Output Needs:

GAP Group presented the material that would be processed through the plant, explaining the outputs required.

**Collaborative Solution:** Peter, Ian Bainbridge, and the CRS team worked together to design a system that would meet the specific needs of the project.

**Timely Delivery:** Deadlines were met, throughput goals were achieved, and all desired outputs were delivered.

**The Results:** A Business Transformation  
The impact on GAP Group's operations has been profound. With the new plant in place, throughput has increased significantly. Peter noted:

"Our old plant was processing about 100 tonnes a week. Now, we're processing that same amount in just one day. The new plant runs at 10 tonnes per hour, and we can easily handle 100 tonnes per shift."

### Working with CRS: A Seamless Experience

GAP Group's collaboration with CRS went beyond just equipment installation. The overall experience has been nothing short of exceptional. Peter reflected:

"From conception to commissioning, the experience with CRS has been flawless. Their approach is professional, and the dialogue was always clear and efficient. They were always ready to tackle any issues that came up and provided solutions quickly."

### Why Recommend CRS?

When asked about recommending CRS, Peter didn't hesitate:

"I would highly recommend CRS to anyone considering their services. They are a company that is easy to work with, approachable, and completely dedicated to solving problems. From design through to installation, they've been fantastic."

**If you're looking to transform your recycling plant or increase throughput, contact CRS NI Ltd. at 028 8076 0496 or visit [www.crsni.com](http://www.crsni.com) to learn more.**



# Dedicated Customer Support to Keep Your Operations on Track

At CRS NI, we understand that your success relies on equipment that performs at its best every day. That's why our commitment to our customers doesn't end when the equipment is installed. We provide practical, hands-on support to ensure your operation stays efficient, productive, and ahead of schedule.



## On-Site Service Engineers – Ready When You Need Them

When time is of the essence, our experienced service engineers can be on-site at short notice to diagnose and resolve issues. Whether it's fine-tuning your equipment or addressing unexpected challenges, our team ensures minimal downtime and maximum performance.

**Extensive Spare Parts Stock – Quick Replacements, Minimal Downtime**  
We keep a comprehensive stock of spare parts to ensure fast replacements when you need them most. This means you're never left waiting for essential components, helping you avoid unnecessary delays and keep your processes moving seamlessly.

## Expert Advice and Guidance – Solutions You Can Trust

Our engineers bring years of hands-on experience to the table, providing practical advice and tailored solutions. Whether you're looking to optimise your setup, maintain efficiency, or address a technical challenge, we're here to guide you every step of the way.

## Top Tips for Equipment Maintenance

To help you keep things running smoothly, here are some essential maintenance tips:  
**Inspect Regularly:** Look for signs of wear, such as loose bolts, unusual noises, or declining performance.

**Clean Thoroughly:** Dust, debris, and material build-up can reduce efficiency and cause wear—keep equipment clean.

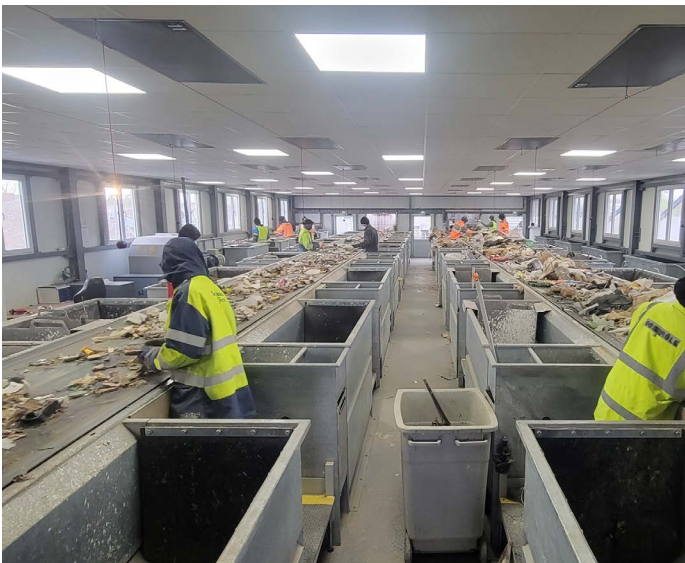
**Follow Maintenance Schedules:** Stick to the recommended servicing intervals for your machinery.

**Use Genuine Parts:** Non-approved parts can compromise performance and safety.  
**Monitor Performance:** Keep track of throughput and efficiency to identify any dips that may indicate a problem.

## Keeping You Moving Forward

Your operation needs dependable support, and CRS NI delivers exactly that. From rapid repairs and expert advice to maintenance and after-sales support, we're here to help you get the most out of your investment.

**If you need assistance or have questions, don't hesitate to [get in touch](#) with our team—we're always ready to help.**





# Pioneering Sustainability in Recycling

CRS NI is leading the charge in sustainability within the recycling industry. By developing forward-thinking solutions, we're not just meeting the demands of our clients; we're actively shaping a more sustainable future and driving positive environmental change on a global scale.

## Reducing Carbon Footprints

Our advanced recycling systems are designed to minimise environmental impact. By enabling efficient recovery of valuable materials, we help clients reduce reliance on landfills, thereby decreasing greenhouse gas emissions. This approach aligns with global efforts to combat climate change and promotes a more sustainable future.

## Advancing the Circular Economy

We are at the forefront of promoting a circular economy, where waste is transformed into valuable resources. Our bespoke waste systems are tailored to recover up to 100% of recyclable materials, ensuring that nothing goes to waste. This not only supports environmental sustainability but also provides economic benefits to our clients.

### Sustainable Manufacturing Practices

CRS NI is committed to sustainability in our operations. We employ energy-efficient processes in our manufacturing facilities and strive to minimise waste by repurposing materials whenever possible. Our continuous investment in new technologies enhances both the efficiency and eco-friendliness of our operations.



## Collaborative Innovation

We believe in the power of collaboration to drive sustainable innovation. By partnering with clients and industry leaders, we develop tailored solutions that address specific environmental challenges. This collaborative approach ensures that our systems are not only effective but also adaptable to the evolving needs of the industry.

## A Commitment to a Greener Future

Our dedication to sustainability is unwavering. We are proud to contribute to global efforts to reduce environmental impact and promote resource efficiency. Through our innovative solutions and sustainable practices, CRS NI is leading the way toward a greener, more sustainable future.

If you're interested in learning more about how our solutions can support your sustainability goals, please [contact us](#). Together, we can make a significant impact on the environment and drive the transition toward a circular economy.



# Join CRS NI at Waste Expo 2025 in Las Vegas

We are thrilled to announce that CRS NI will be exhibiting at Waste Expo 2025 in Las Vegas, one of the leading global events for waste management and recycling professionals. This marks an exciting opportunity to showcase our innovative solutions and connect with industry leaders worldwide.



## When and Where:

- **Date:** May 5–8, 2025
- **Venue:** Las Vegas Convention Center
- **Stand:** Invest Northern Ireland

For more than 50 years, WasteExpo has been the driving force behind ground-breaking innovations in the solid waste and recycling industries setting the stage for an even more crucial future.

It is the ultimate destination where motivated buyers and industry leaders converge, offering you the unparalleled opportunity to forge powerful connections in just a few short days.

Our small but impactful stand will highlight CRS NI's cutting-edge technology, including our bespoke recycling equipment designed to maximise recovery, improve operational efficiency, and advance sustainability.

## Why Visit Our Stand?

Learn About Our Innovations: Discover how our solutions, including advanced trommels, air separation systems, and flip flow technology, can transform your waste processing.

## Meet Our Experts:

Our team of specialists will be available to discuss your unique waste management challenges and explore tailored solutions to meet your needs. Explore Sustainability in Action: See how CRS NI is driving the circular economy and reducing carbon footprints across the globe.

## Let's Connect!

We're eager to meet partners, clients, and industry innovators who share our vision for a more sustainable future. Whether you're looking for ways to optimise your recycling processes or simply want to learn about the latest in

waste management technology, make sure to stop by our stand.

For more information about Waste Expo 2025, or to schedule a meeting with us during the event, [get in touch](#) with our team today. We look forward to seeing you in Las Vegas!



+44 (0) 28 8076 0496  
sales@crsni.com  
www.crsni.com

Office Address:  
136 Termon Road, Carrickmore,  
County Tyrone, BT79 9HW, N. Ireland